

1702 SQ FT  
3 BEDS  
2.5 BATHS

# VALMORE 3



UPPER: 945 SQ FT

MAIN: 757 SQ FT

# Sterling HOMES

A QUALICO Company

## ELEVATIONS



ARTS & CRAFTS



CONTEMPORARY



CRAFTSMAN



FARMHOUSE



FARMHOUSE #1



MID-CENTURY MODERN



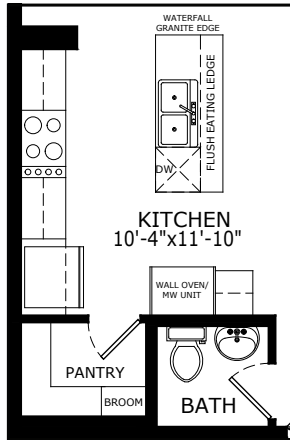
CONTEMPORARY



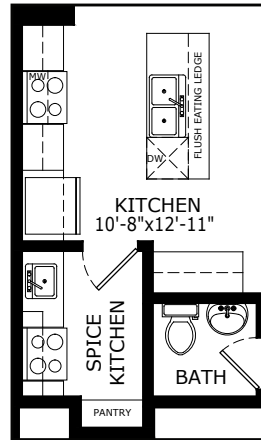
FARMHOUSE

## MAIN FLOOR OPTIONS

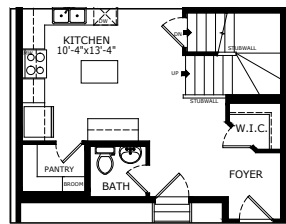
OPTIONAL EXECUTIVE KITCHEN



OPTIONAL SPICE KITCHEN

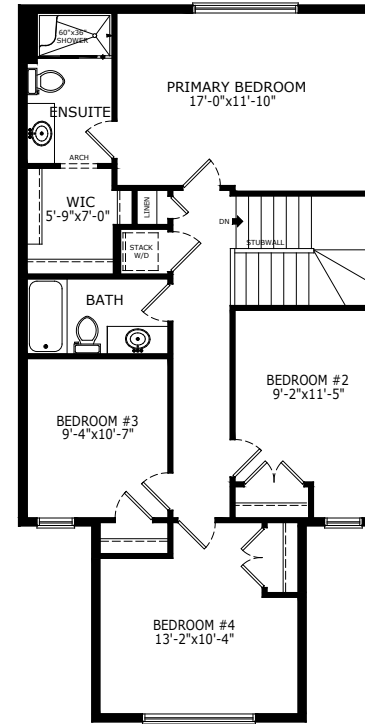


OPTIONAL KITCHEN

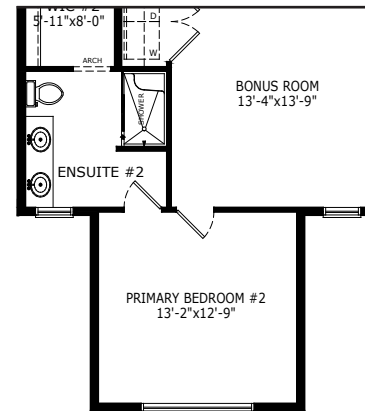


## UPPER FLOOR OPTIONS

OPTIONAL 4 BEDROOMS

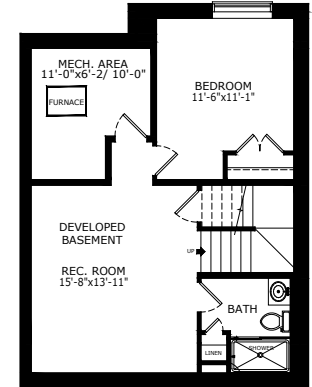


OPTIONAL 2ND PRIMARY BEDROOM

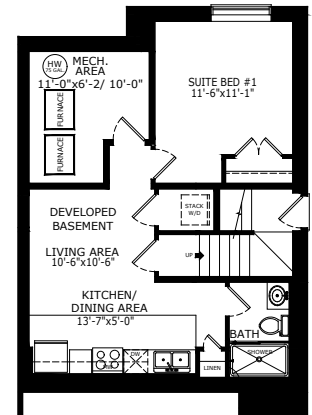


## BASEMENT OPTIONS

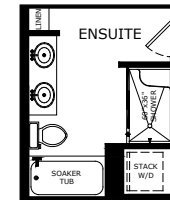
STANDARD 510 SQ FT



1 BEDROOM 'LEGAL SUITE'\* 516 SQ FT



OPTIONAL ENSUITE



Scan here for floorplan options and more

\*Legal Suite availability varies by community and municipal regulations.

# Build Your Life

STERLINGCALGARY.COM